

MAKE YOUR OWN *Derby* * FACEMASK!

MATERIALS

You will need:

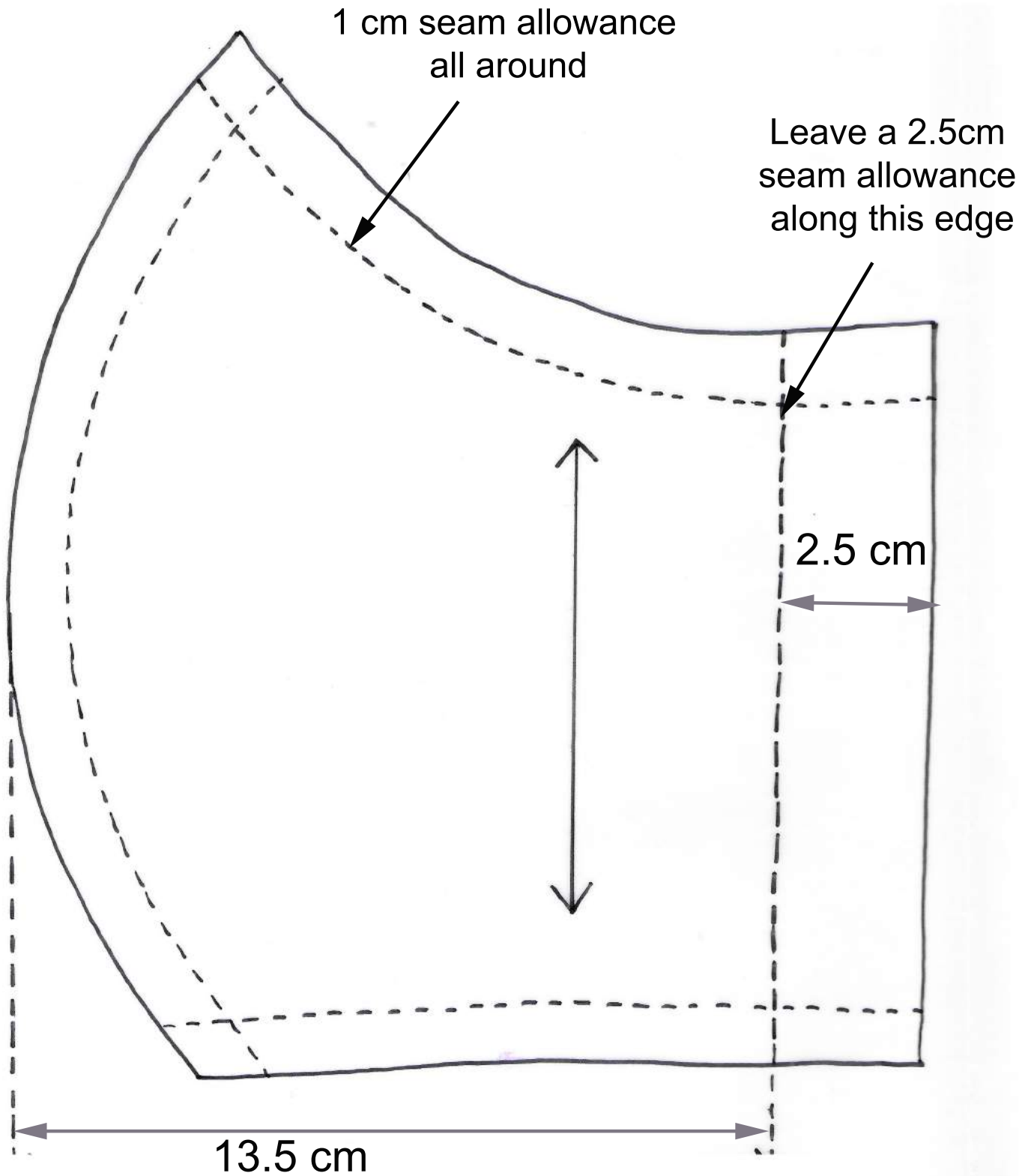
- 2 pieces of tightly woven cotton fabric (A) for front of mask.
- 2 pieces of cotton fabric (B) for inside lining of the mask.
- 2 pieces of lightweight padded fabric You can also use a light polar fleece, lightweight towelling or other similar fabric. If you don't have any fabric like this, don't worry., just use layers A and B of cotton fabric mentioned above..
- 2 pieces of non-woven sew-on or iron-on interfacing fabric (optional)
- 6cm of pipe cleaner wire (optional)- or some of plastic covered freezer bag ties which you can twist together.
- 1 metre of narrow ribbon or cord, or 50 cm of narrow elastic.
- A pair of scissors, sewing thread and a sewing machine; (but you can also sew the mask by hand).

The pattern for this mask has been based on the pattern published by the Grenoble Hospital. I have modified it slightly.
[www.infirmiers.com /pdf/ masque -tissu.](http://www.infirmiers.com/pdf/masque-tissu)

PLEASE NOTE: This is not a surgical mask, but it will nevertheless help to protect you from Covid-19.

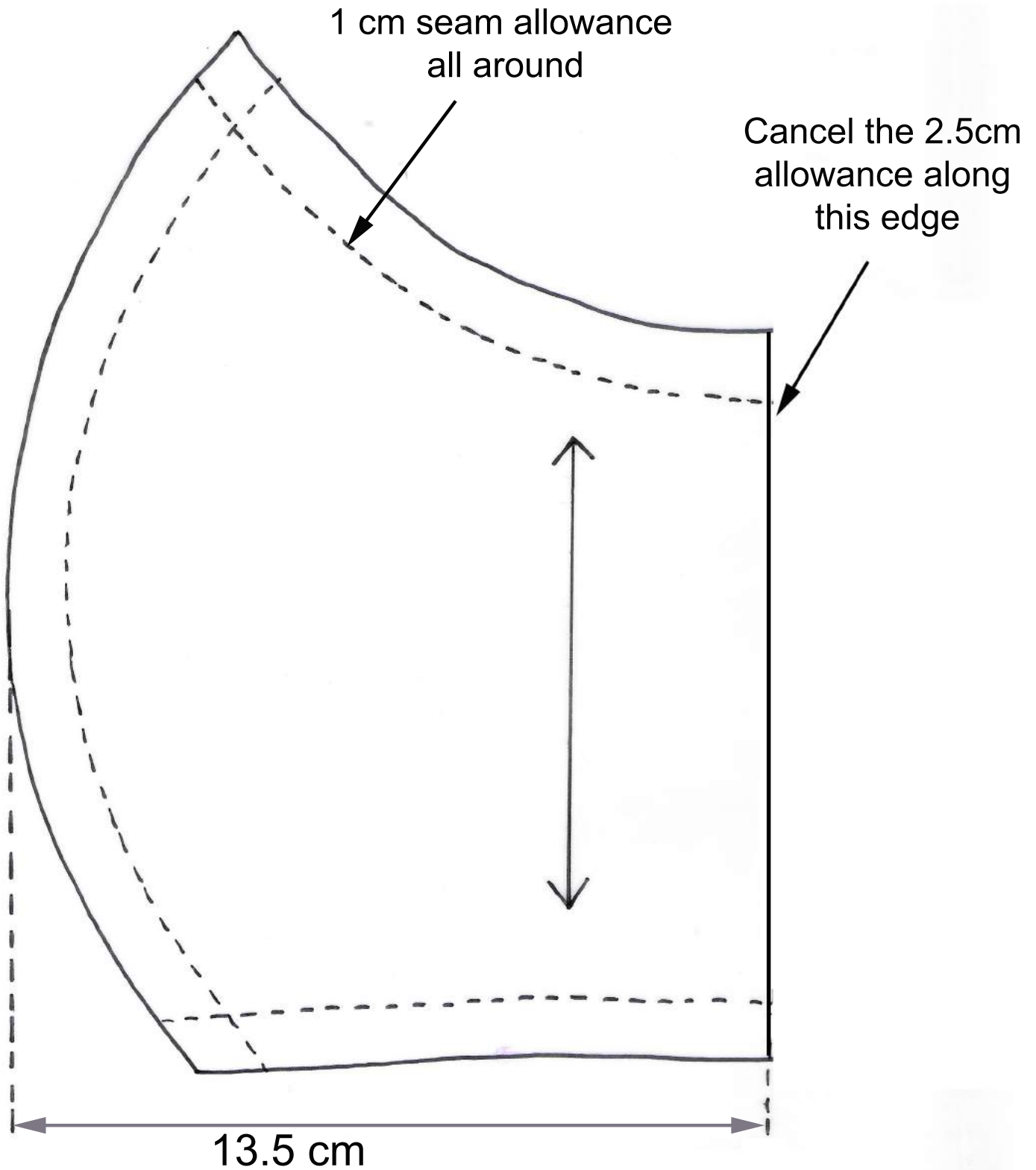
The mask should be washed in soapy water at +40°C after each usage.

MAKE YOUR OWN *Derby* * **FACEMASK!**



MAIN PATTERN- SHAPE A

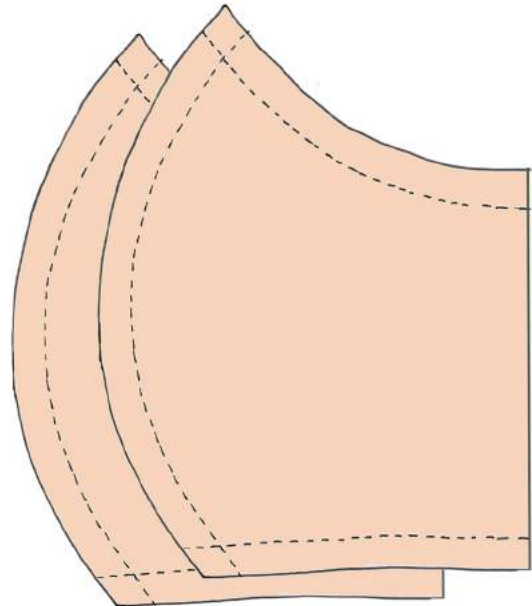
MAKE YOUR OWN *Derby* * **FACEMASK!**



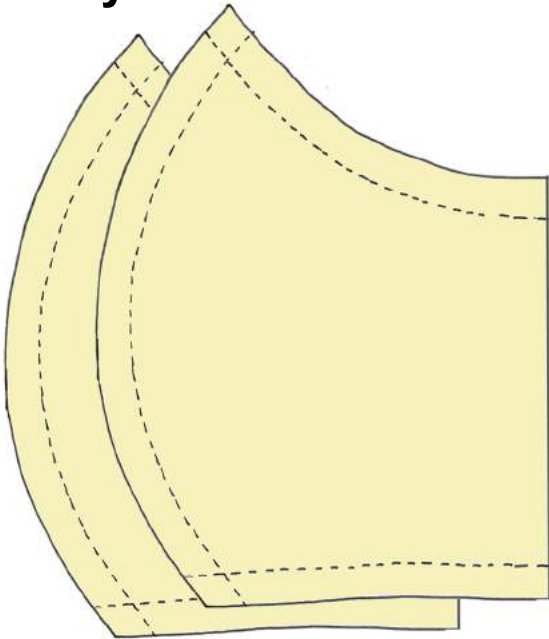
MAIN PATTERN- SHAPE B



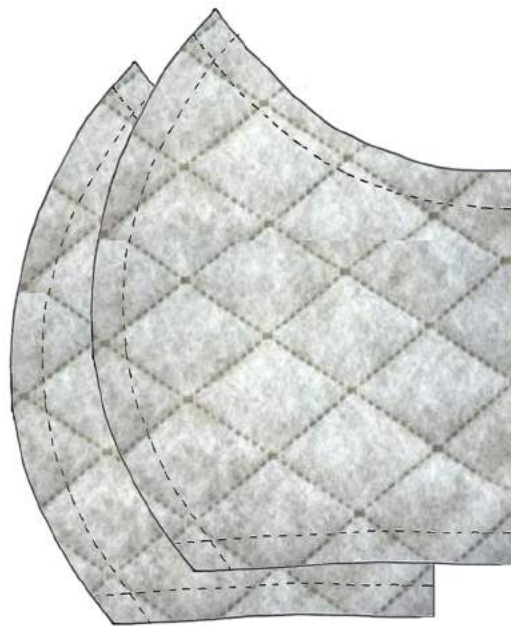
Cut 2 pieces of shape A in closely woven cotton fabric



Cut 2 pieces of shape B in interfacing fabric (optional)



Cut 2 pieces of Shape B in cotton lining fabric



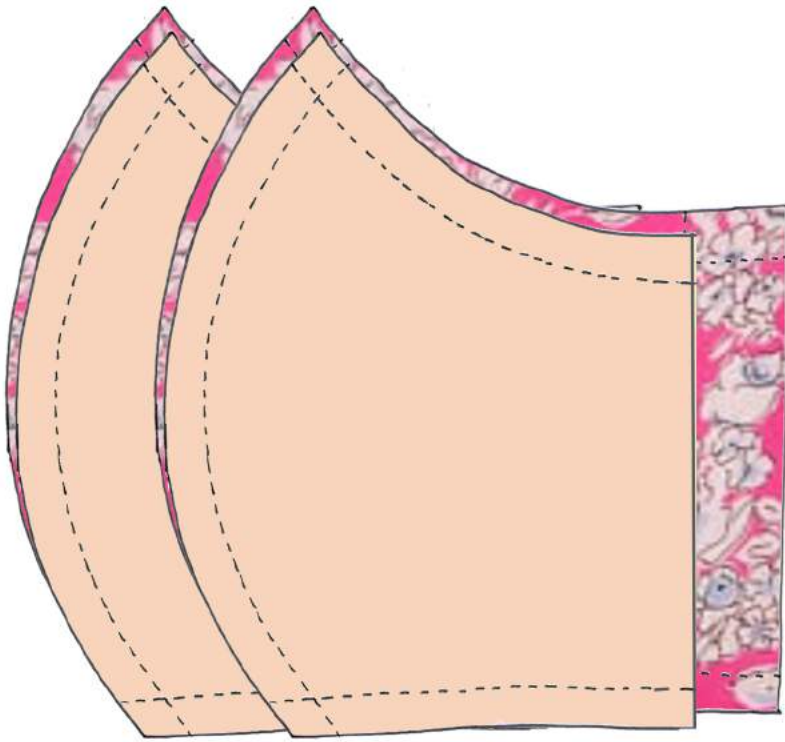
Cut 2 pieces of Shape B in padding fabric (optional)



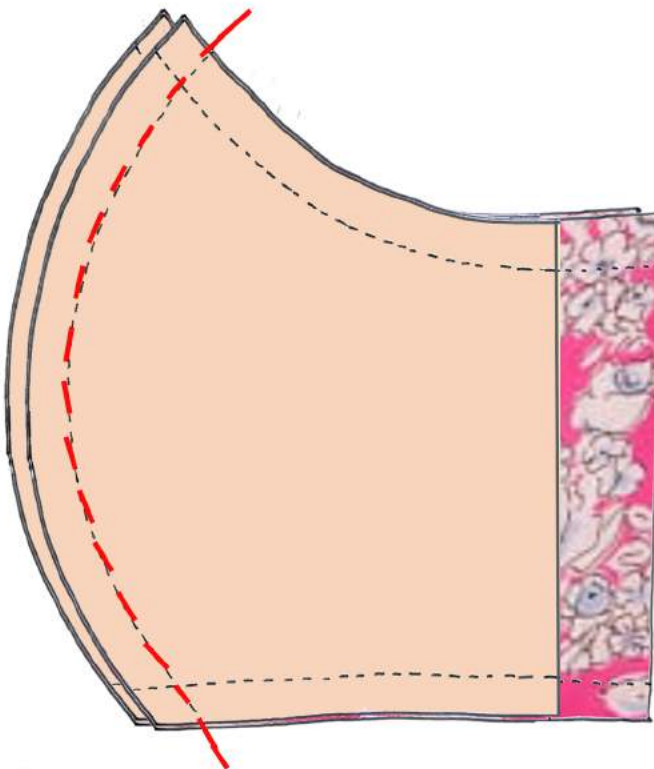
6cm pipe cleaner or a few freezer bag ties



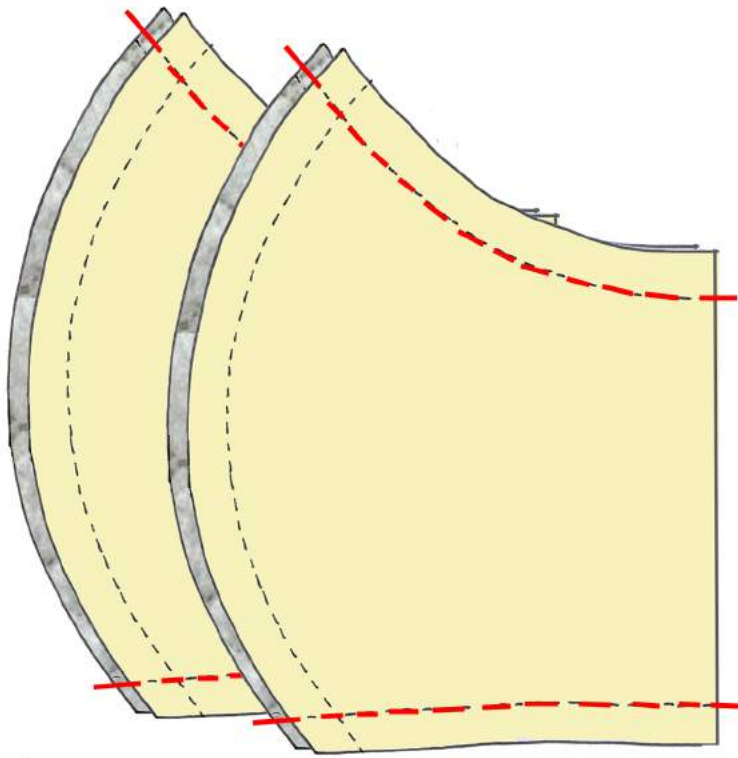
1m of cord or ribbon, or 60 cm narrow elastic.



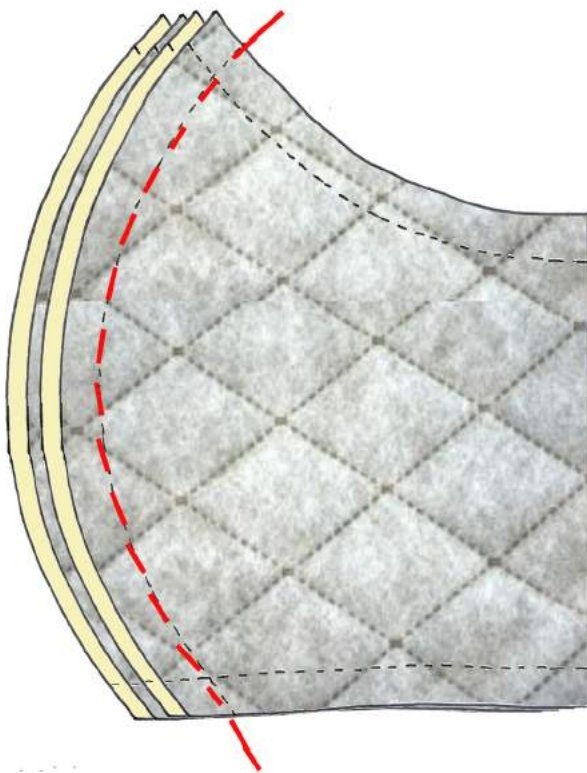
1. If you are using interfacing, sew or iron it on to the cotton shape A



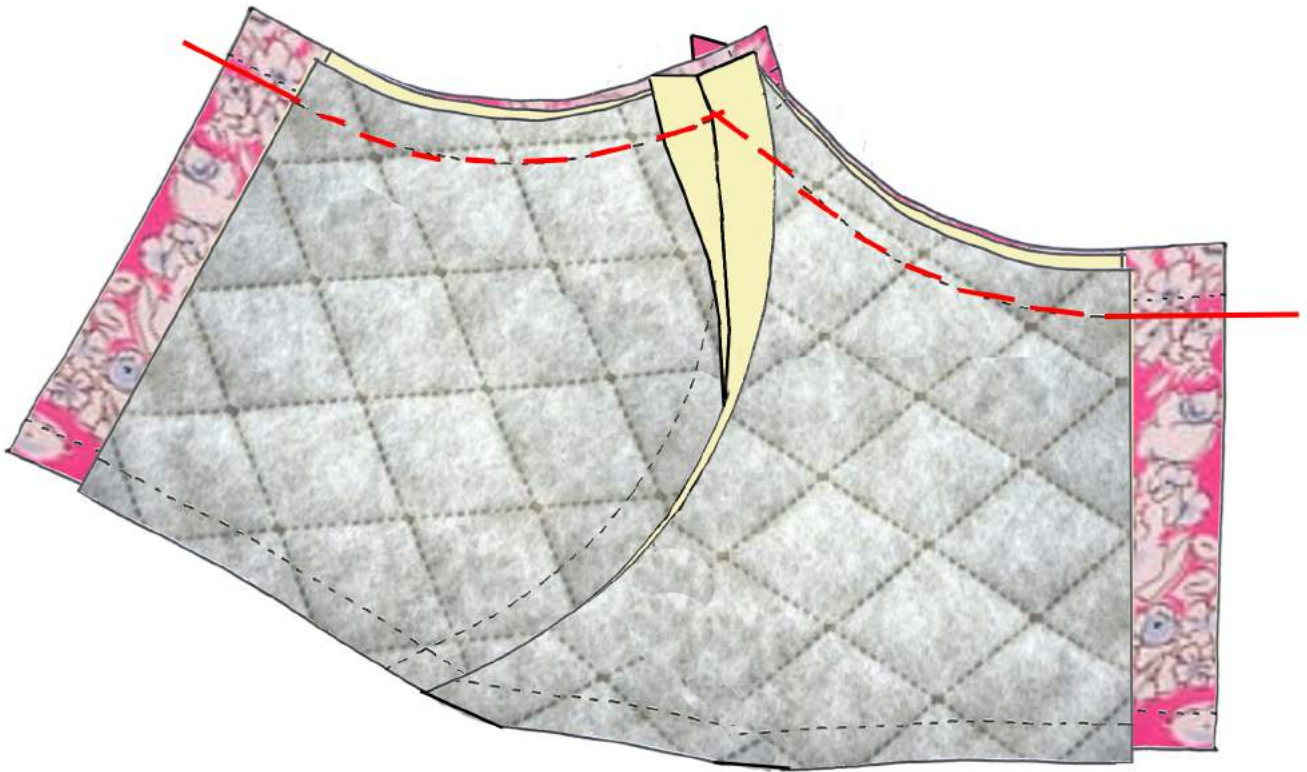
2. Sew the two outside shape A parts together. Open the seams and iron flat.



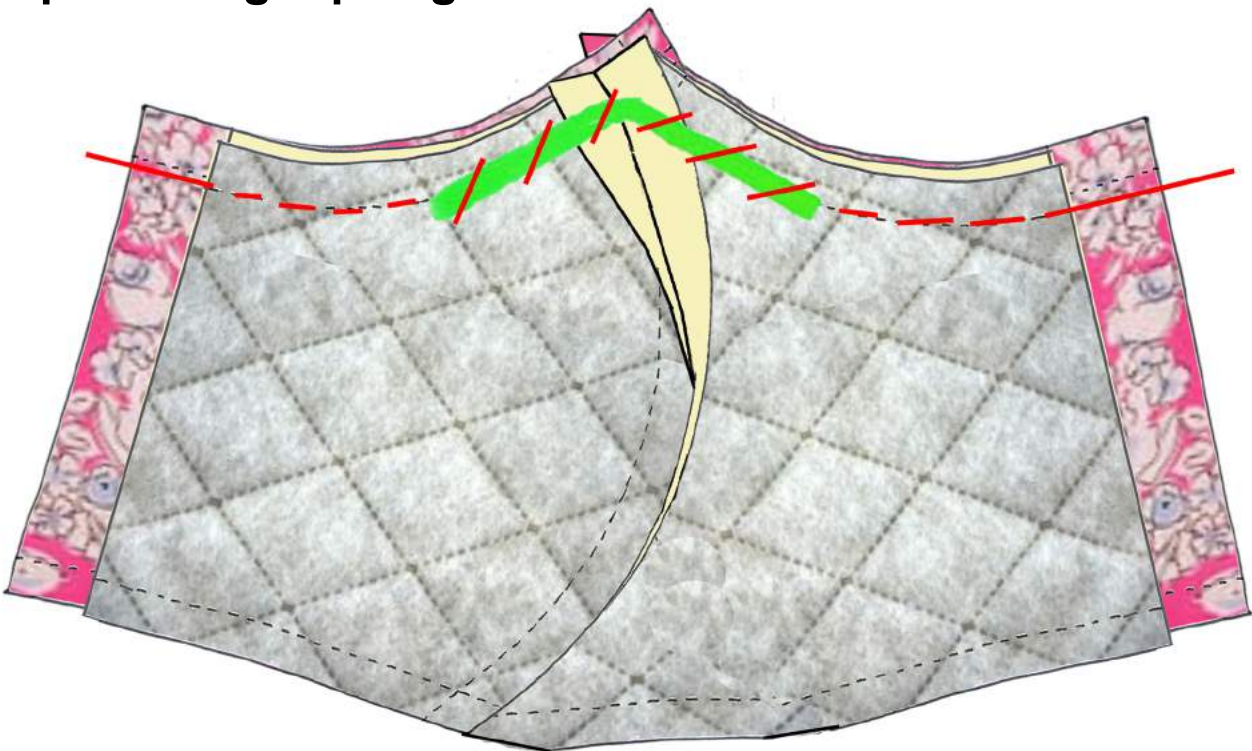
3. Sew the 2 pieces of cotton lining (shape B) to the padding shapes



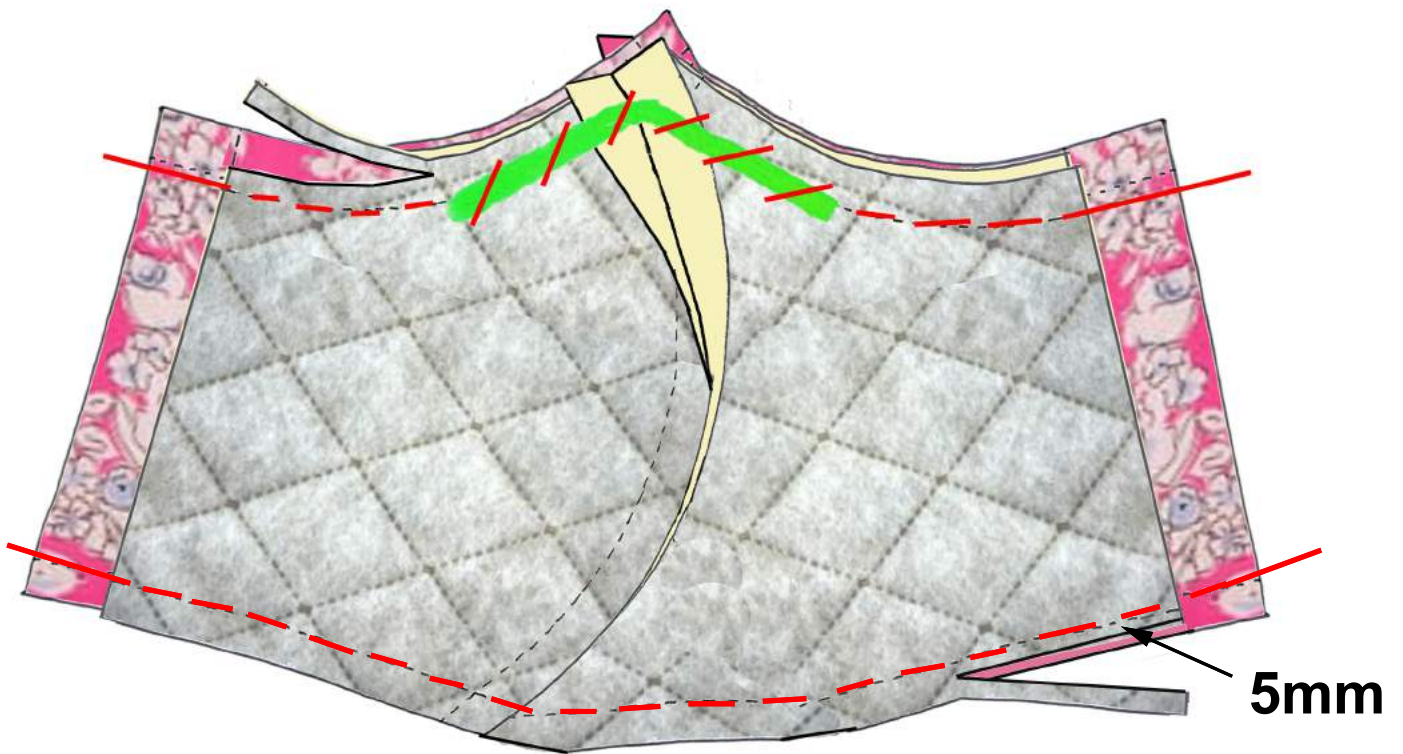
4. Then sew these two lining and padding layers together and press open seams.



5. Sew the padded lining part to outside printed cotton part along top edge.



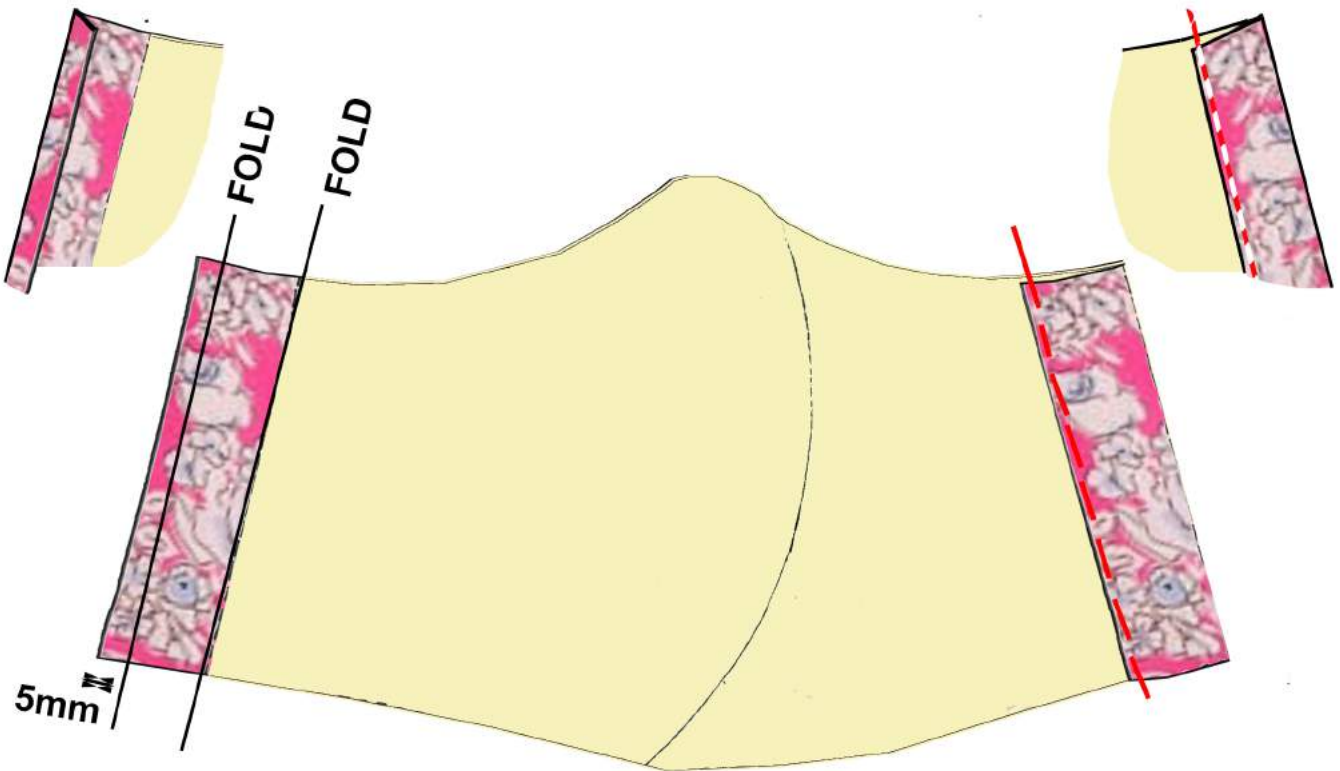
6. Bend the pipe cleaner in the middle and hand stitch in place to the top inside seam of mask. This will allow you adjust the mask over your nose.



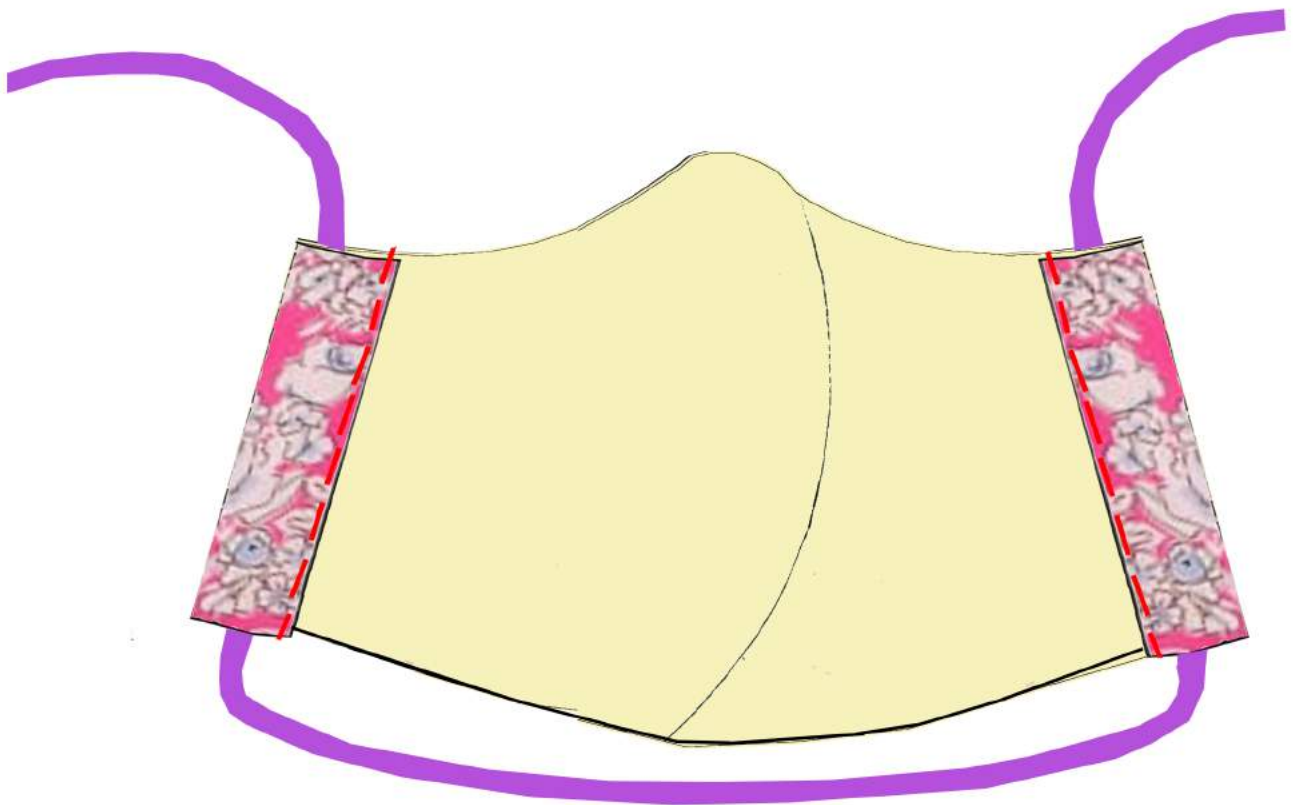
7. Sew both sides of the mask together along the bottom edge. Cut away excess padding at seams as shown, leaving 5mm next to seam.



8. Turn the mask right side out. You may put some top-stitching along top and bottom of mask to make it neater if you wish.



8. On the 2.5 cm edges, make a fold 5mm from edge, then make another fold and turn towards inside , covering the lining and padding. Sew along the edge.



9. Thread the cord or elastic through the side casings as shown.



10. Your mask has now been completed. If you like you can also put a bead on each end of the cord to stop the cord slipping out. If using elastic, please cut to size and fix in place.



11. To wear the mask, the bottom cord should be placed behind your neck and the top part of cord passed over the ears and tied at the back of your head.

You can now match your mask to your favourite DERHY dress!